

United States Department of the Interior  
National Park Service

SEP 15 1989

National Register of Historic Places  
Registration Form

NATIONAL REGISTER

This form is for use in nominating or requesting determinations of eligibility for individual properties or districts. See instructions in *Guidelines for Completing National Register Forms* (National Register Bulletin 16). Complete each item by marking "x" in the appropriate box or by entering the requested information. If an item does not apply to the property being documented, enter "N/A" for "not applicable." For functions, styles, materials, and areas of significance, enter only the categories and subcategories listed in the instructions. For additional space use continuation sheets (Form 10-900a). Type all entries.

1. Name of Property

historic name Western Promenade  
other names/site number \_\_\_\_\_

2. Location

street & number Bounded by W. Promenade, Valley St. & Maine Med. Center  not for publication  
city, town Portland  vicinity  
state Maine code ME county Cumberland code 005 zip code 04101

3. Classification

Ownership of Property

- private
- public-local
- public-State
- public-Federal

Category of Property

- building(s)
- district
- site
- structure
- object

Number of Resources within Property

Contributing	Noncontributing
_____	_____ buildings
<u>1</u>	_____ sites
<u>1</u>	<u>1</u> structures
_____	_____ objects
<u>2</u>	<u>1</u> Total

Name of related multiple property listing: \_\_\_\_\_

N/A

Number of contributing resources previously listed in the National Register 0

4. State/Federal Agency Certification

As the designated authority under the National Historic Preservation Act of 1966, as amended, I hereby certify that this  nomination  request for determination of eligibility meets the documentation standards for registering properties in the National Register of Historic Places and meets the procedural and professional requirements set forth in 36 CFR Part 60. In my opinion, the property  meets  does not meet the National Register criteria.  See continuation sheet.

Signature of certifying official

Carol S. Patterson SHPO

Date

9/8/89

Maine Historic Preservation Commission

State or Federal agency and bureau

In my opinion, the property  meets  does not meet the National Register criteria.  See continuation sheet.

Signature of commenting or other official

Date

State or Federal agency and bureau

5. National Park Service Certification

I, hereby, certify that this property is:

- entered in the National Register.  See continuation sheet.
- determined eligible for the National Register.  See continuation sheet.
- determined not eligible for the National Register.
- removed from the National Register.
- other, (explain): \_\_\_\_\_

William Byers

Entered in the National Register

10/16/89

Signature of the Keeper

Date of Action

**6. Function or Use**

Historic Functions (enter categories from instructions)

Landscape/Natural FeatureLandscape/Park

Current Functions (enter categories from instructions)

Landscape/Natural FeatureLandscape/Park**7. Description**

Architectural Classification

(enter categories from instructions)

No Style

Materials (enter categories from instructions)

foundation N/Awalls N/Aroof N/A

other \_\_\_\_\_

Describe present and historic physical appearance.

Located at the western end of the Portland peninsula, the Western Promenade rises 120 feet from the base of the escarpment. The park land totals 18.13 acres. The city purchased the first parcels along the promenade in 1836-1837; the last parcels were acquired in 1905 by Mayor James Phinney Baxter. The linear park is bounded by the Western Promenade to the east and south, Maine Medical Center to the north, and Valley Street to the west. Views from the Western Promenade take in a large area of countryside and the Presidential Range, nearly 70 miles away in New Hampshire. The Western Promenade abuts the residential Western Promenade Historic District, listed in the National Register on February 16, 1984. The appearance of the Promenade today is largely the result of the design efforts of William Goodwin, City Civil Engineer, and the Olmsted Brothers, Landscape Architects.

Improvements to the Western Promenade paralleled those made to the Eastern Promenade. The Eastern Argus (July 13, 1836) reported, "... the western end of the city is to be ornamented in like manner. A drive is to be constructed from Bramhall's Hill over to Vaughan's Bridge in a similar style of magnificence."

The 1876 Birds-eye-View of Portland illustrates that like the Eastern Promenade the north-south drive was bordered by a row of trees.

William Goodwin, City Civil Engineer, was very committed to improving Portland's parks (see Deering Oaks N.R.N.). On December 2, 1878, Mr. Goodwin presented a paper entitled "Our Public Grounds." In it he described the condition of the Western Promenade.

The immediate approach to the plain of the Promenade is rougher and more uncouth than any piece of country road you will find within 10 miles of Portland. The Promenade is 2,100 feet in length from Bowdoin Street to Arsenal Street. Upon this there are no improvements except that Mr. Brown has set out and cared for good trees along the sidewalk.

United States Department of the Interior  
National Park Service

## National Register of Historic Places Continuation Sheet

Section number 7 Page 2

---

Goodwin went on to recommend that the approaches to the Promenade, Danforth, Bowdoin and West Streets be widened and flattened with a double row of trees. He also noted that the Western Cemetery would soon be abandoned and that it could be subsequently utilized as a ramble. "This would be one of the most attractive features of our public resort" ("Our Public Grounds"). Goodwin concluded his report by saying, "The work can never be wholly finished. But it can be begun in a small way and carried on gradually as the City is able." The City Reports indicate that, as Goodwin predicted, year-by-year, improvements were carried out.

In 1879 Goodwin reported that the grading of West Street was completed from the Promenade to Chadwick Street, a distance of 292 feet. The street was designed with ten foot sidewalks and an esplanade of equal width and a forty foot street with edgestones and paved gutters bordering the drive. The esplanades were planted with grass and eighteen elms; a row of nine on each side. In 1915 the esplanade was built from Bowdoin Street to Vaughan Street. It was seeded with grass and lined with sixty rock maples.

The wall and terrace at Prospect Point at the head of Bowdoin Street was constructed in 1885. In 1888, a large ornamental bed with a broad path around it was installed at the head of West Street.

Goodwin's resourcefulness with limited funds, civil engineer talents, and aesthetic sense are illustrated in his solution for reclaiming the steep western bank described in his report to the city in 1872.

The details of work done on the western Promenade comprise the filling, shaping and turfing of the large gulch in the face of the hill oposite the head of Pine Street, and a smaller one nearby, in the former of which tree pairs of ^ braces of 10 X 10 inch timber, with a spread at the base of 30 feet, were set with the butts buried under the tree-roots and the apex pointing up the hill. Buried against the upper side of these were lime casks filled with stone and gravel, with earth in the top of each, serving as vases for shrubbery if ever required for the purpose. On the day succeeding the completion of this work a very heavy rain occurred, and soon after several others without any damage to the slope.

Many improvements had been made to the Western Promenade when in 1904, at the direction of Mayor James Phinney Baxter, the Olmsted Brothers, Landscape Architects, were hired to prepare a plan for the Promenade and link it to a Portland Parks System.

United States Department of the Interior  
National Park Service

**National Register of Historic Places  
Continuation Sheet**

Section number 7 Page 3

---

The Olmsted Brothers plan was prepared by John C. Olmsted with Henry Vincent Hubbard. Consistent with Goodwin's design scheme, the Olmsted plan sought to maximize views, improve pedestrian and vehicular traffic, and provide a link to Deering Oaks (see N.R.N.). In the Olmsted design a double row of regularly spaced trees line the Western Promenade from the northern entry at Bramhall Street to the southern end at the intersection of Vaughan and Danforth Streets. Only one formal element was included in the plan; at West Street a terrace and shelter was proposed.

Within the boundaries rambling paths were proposed and the planting of shrubs and irregularly placed trees along the lower path exiting at Valley Street. At this point, outside the boundaries of the Promenade, regularly spaced trees defined the link along Valley and Portland Streets to the Deering Oaks.

Many features of the Olmsted plan were not executed including the shelter and terrace at West Street, the development of the lower walk with entrances from lower Danforth Street and the Western Cemetery.

Despite the inability of the city to carry out the designs proposed for the Western Promenade, the site maintains its original design objective. That is, to provide uninterrupted views of the surrounding countryside. There is one contributing site, one contributing structure and one non-contributing structure.

## 8. Statement of Significance

Certifying official has considered the significance of this property in relation to other properties:

nationally  statewide  locally

Applicable National Register Criteria  A  B  C  D

Criteria Considerations (Exceptions)  A  B  C  D  E  F  G

Areas of Significance (enter categories from instructions)

Landscape Architecture  
\_\_\_\_\_  
\_\_\_\_\_  
\_\_\_\_\_

Period of Significance

1836 - c. 1920  
\_\_\_\_\_  
\_\_\_\_\_

Significant Dates

1836  
1878  
1905

Cultural Affiliation

N/A  
\_\_\_\_\_  
\_\_\_\_\_

Significant Person

N/A

Architect/Builder

Goodwin, William C.E.  
Olmsted Brothers

State significance of property, and justify criteria, criteria considerations, and areas and periods of significance noted above.

The scenic value of the Western Promenade was recognized early on in Portland's urban history. Located at the western end of the city with views of the White Mountains, the site is significant primarily as an early example of a recognized and preserved scenic landscape. The Promenade is part of the proposed Portland Parks System as developed by the Olmsted Brothers in 1905. It is eligible for nomination to the Register under criterion C for its landscape design.

Initial acquisition of the parcels comprising the Western Promenade was made in 1836 following a campaign to promote the need for publicly-owned open space in what was becoming an increasingly urbanized area. Judging from the following excerpt of a letter published in the Eastern Argus on June 2, 1836, public opinion strongly supported the idea:

Messrs. Edwards. As our city authorities are now agitating the very popular subject of a Mall, park or Promenade, for the ornament of the town as well as for the health and pleasure of its citizens, and as a committee is now engaged in looking up an eligible spot for this purpose, allow me to make one or two suggestions in furtherance of this desirable project. I do not intend to show its utility, or the necessity of the measure. Those points are as apparent to the reasons and good-sense of the community, as are the rays of this morning's sun to the bodily eye. My intention is merely to present, for the reflection of our city authorities two sites, one each at the extreme end of the town, both admirably adapted for the object. First, "Bramhall's Hill" where a delightful Promenade or Park can be made, running along the brow of the hill, from the Arsenal to the new Cemetery, affording a pleasant and picturesque view of the country for miles around, with all variety of hills and dales, of plains and waters, villages and farm houses, requisite to romantic scenery and a delightful landscape.

See continuation sheet

**9. Major Bibliographical References**

City of Portland Auditor's Report. Portland: Ford & Rich, Printers. 1878-1930.

Previous documentation on file (NPS):

- preliminary determination of individual listing (36 CFR 67) has been requested
- previously listed in the National Register
- previously determined eligible by the National Register
- designated a National Historic Landmark
- recorded by Historic American Buildings Survey # \_\_\_\_\_
- recorded by Historic American Engineering Record # \_\_\_\_\_

See continuation sheet

Primary location of additional data:

- State historic preservation office
- Other State agency
- Federal agency
- Local government
- University
- Other

Specify repository: \_\_\_\_\_

**10. Geographical Data**

Acreeage of property 18.13

UTM References

A 19 | 396880 | 4833760  
 Zone Easting Northing

C 19 | 397480 | 4832850

B 19 | 397080 | 4833830  
 Zone Easting Northing

D 19 | 397000 | 4832680

See continuation sheet

Verbal Boundary Description

The nominated property of 18.13 acres occupies the City of Portland tax map 64-E-24.

See continuation sheet

Boundary Justification

The boundary embraces the entire parcel of land historically associated with the Western Promenade.

See continuation sheet

**11. Form Prepared By**

name/title Elizabeth Igleheart, Architectural Historian

organization Maine Historic Preservation Commission date July, 1989

street & number 55 Capitol Street telephone (207) 289-2132

city or town Augusta, state Maine zip code 04333

United States Department of the Interior  
National Park Service

**National Register of Historic Places  
Continuation Sheet**

Section number 8 Page 2

---

Subsequent work on the park consisted of the construction of a tree lined drive for viewing the panorama, features that were clearly evident in the 1876 Bird's-eye-View of Portland.

Largely through the efforts of city civil engineer William Goodwin, the importance of the Western Promenade was reaffirmed in the late nineteenth century. In a paper entitled, "Our Public Grounds," which he presented on December 2, 1878, Goodwin described the significance of the Promenade:

... Little has been done for the improvement of our advantages of situation, for encouragement of open-air exercise, and for social out-of-door intercourse, those prime motors of public cheerfulness and neighborly good-fellowship. Our streets are attractive, but they are for many of us only thoroughfares between our homes and our posts of duty, and so we turn for recreation to our "high places" [Eastern and Western Promenades], where are revealed distant prospects unrivaled in variety of grandeur and beauty.

For the duration of his tenure, many of Goodwin's ideas about the use and design of this landscape were carried out. Portland's favorable natural setting continued to be commented upon in the early 20th century.

...no city in this country can boast of two such prominent outlooks as our Eastern and Western Promenades, and it is hard to decide which is more beautiful. For a day view, Fort Allen Park, with its every-changing scenery, is a drawing card to our summer visitors, but for a quiet hour late on a pleasant summer afternoon, say about sunset, the Western Promenade has charms known to only a few of the residents of Portland but is appreciated by the summer tourists, who flock there for the splended view they get of the White Mountains and the gorgeous sunsets, which cannot be rivaled even by the blue skys of Italy (Auditor's Report, 1907).

James Phinney Baxter, Mayor of Portland for six non-concurrent terms beginning in 1893, recognized the social and aesthetic value of the parks and was a prime force in their development. When he was unable to convince the city to purchase nine acres belonging to the Brown estate at the southwesterly slope of the hill, Baxter arranged an exchange and the parcel was added to the park. In 1905, the Olmsted Brothers were hired by Mayor Baxter to prepare a design for the Western Promenade and link it to the proposed Portland Parks System. John C. Olmsted was the partner in charge. Henry Vincent Hubbard, apprentice with the firm, was also involved (see Eastern Promenade, N.R.N.).

**United States Department of the Interior  
National Park Service**

**National Register of Historic Places  
Continuation Sheet**

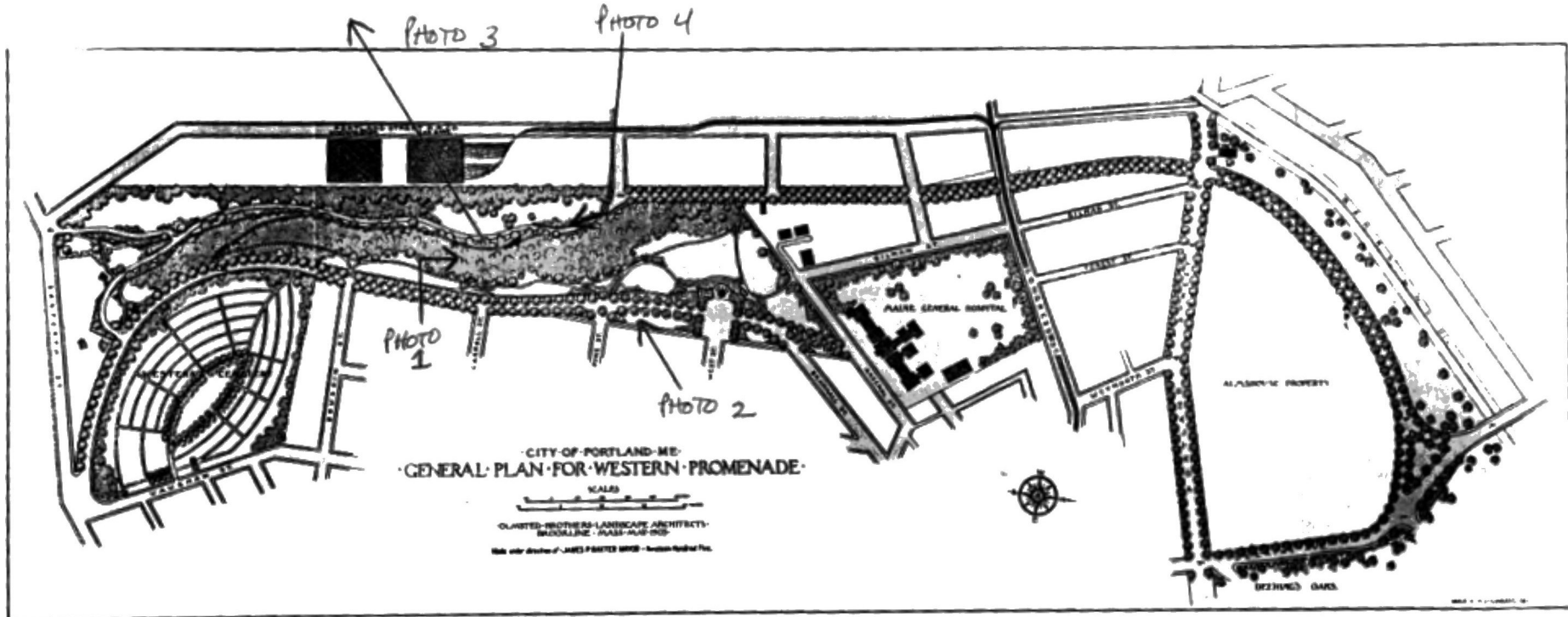
Section number 8 Page 3

---

Unlike the Olmsted design for the Eastern Promenade, the Western Promenade was laid out primarily as a ramble with a drive at the summit of the escarpment. No structured recreational activities were proposed in the design. Perhaps the size of the site would not allow for ballfields, playgrounds, tennis courts, etc., without obstructing the views. In addition, the neighborhood may not have required such facilities. The Western Promenade is Portland's most fashionable residential area, with large houses on generous lots. Until 1915 the area was dominated by Bramhall, the J. B. Brown estate. Olmsted's plan appears to have responded to both the site and the needs of the neighborhood.

The Western Promenade remains significant today by providing visitors and residents of Portland with a publicly-owned and maintained site from which to take in the magnificent views of the countryside and the White Mountains. Although increased development has changed the view immediately to the west, the Promenade retains the purpose and intent for which it was initially developed and preserved.





WESTERN PROMENADE  
Portland, Maine

UNITED STATES DEPARTMENT OF THE INTERIOR  
NATIONAL PARK SERVICE

NATIONAL REGISTER OF HISTORIC PLACES  
EVALUATION/RETURN SHEET

REQUESTED ACTION: NOMINATION

PROPERTY Western Promenade  
NAME:

MULTIPLE  
NAME:

STATE & COUNTY: MAINE, Cumberland

DATE RECEIVED: 9/15/89 DATE OF PENDING LIST: 9/27/89  
DATE OF 16TH DAY: 10/13/89 DATE OF 45TH DAY: 10/30/89  
DATE OF WEEKLY LIST:

REFERENCE NUMBER: 89001710

NOMINATOR: STATE

REASONS FOR REVIEW:

APPEAL: N DATA PROBLEM: N LANDSCAPE: Y LESS THAN 50 YEARS: N  
OTHER: N PDIL: N PERIOD: N PROGRAM UNAPPROVED: N  
REQUEST: N SAMPLE: N SLR DRAFT: N NATIONAL: N

COMMENT WAIVER: N

ACCEPT  RETURN  REJECT 10/16/89 DATE Entered in the  
National Register

ABSTRACT/SUMMARY COMMENTS:

RECOM./CRITERIA \_\_\_\_\_  
REVIEWER \_\_\_\_\_  
DISCIPLINE \_\_\_\_\_  
DATE \_\_\_\_\_

DOCUMENTATION see attached comments Y/N see attached SLR Y/N

---

CLASSIFICATION

count       resource type

---

STATE/FEDERAL AGENCY CERTIFICATION

---

FUNCTION

historic       current

---

DESCRIPTION

architectural classification  
 materials  
 descriptive text

---

SIGNIFICANCE

Period      Areas of Significance--Check and justify below

Specific dates      Builder/Architect  
Statement of Significance (in one paragraph)

summary paragraph  
 completeness  
 clarity  
 applicable criteria  
 justification of areas checked  
 relating significance to the resource  
 context  
 relationship of integrity to significance  
 justification of exception  
 other

---

BIBLIOGRAPHY

---

GEOGRAPHICAL DATA

acreage       verbal boundary description  
 UTM's       boundary justification

---

ACCOMPANYING DOCUMENTATION/PRESENTATION

sketch maps     USGS maps     photographs     presentation

---

OTHER COMMENTS

Questions concerning this nomination may be directed to

\_\_\_\_\_ Phone \_\_\_\_\_

Signed \_\_\_\_\_ Date \_\_\_\_\_



WESTERN PROMENADE  
PORTLAND, MAINE  
ELIZABETH IGLEHEART

8/89

MHPc

VIEW NORTH

1 OF 4



WESTERN PROMENADE

PORTLAND, MAINE

ELIZABETH IGLEHEART

8/89

MHPC

VIEW TO SW

2 OF 4





WESTERN PROMENADE  
PORTLAND, MAINE

ELIZABETH IGLEHEART

8/89

MHPc

VIEW TO SW

3 OF 4



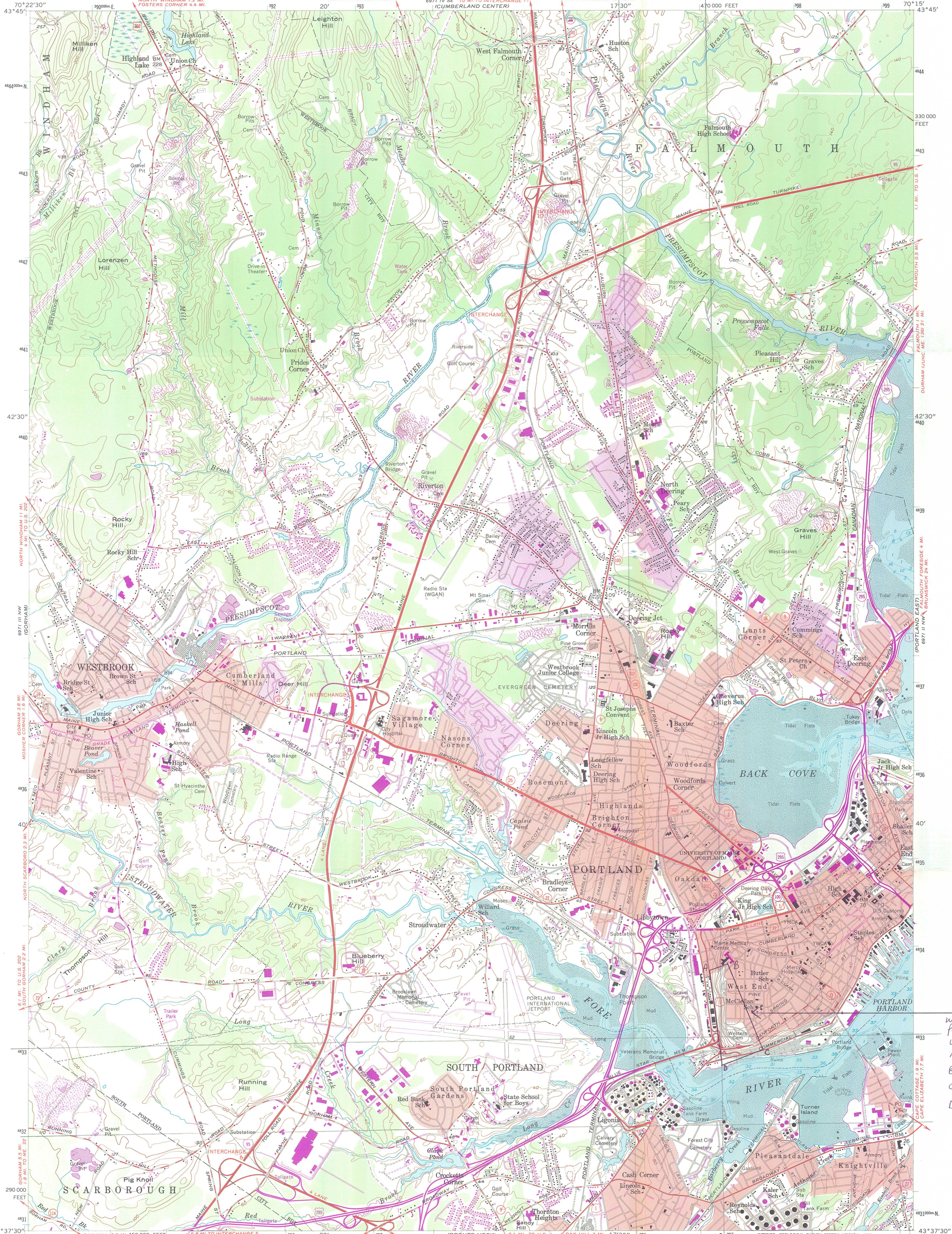
WESTERN PROMENADE  
PORTLAND, MAINE  
ELIZABETH IGLEHEART

8/89

MHPC

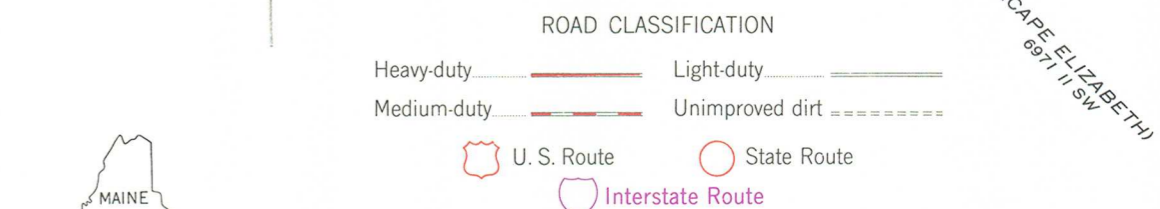
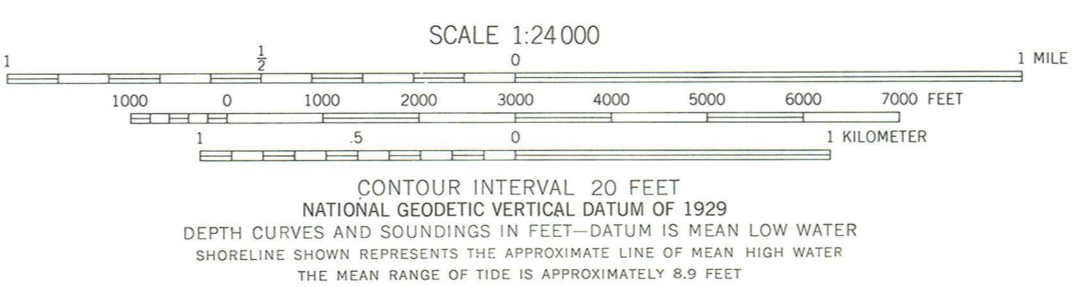
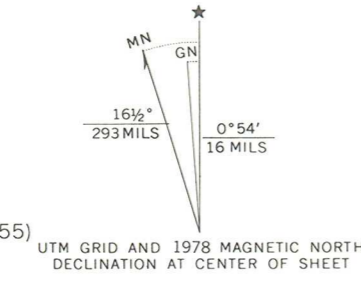
VIEW TO SOUTH ALONG  
PATH

4 OF 4



WESTERN PROMENADE  
PORTLAND, MAINE  
UTM:  
A 19/396880/4833760  
B 19/397080/4833830  
C 19/397480/4832850  
D 19/397000/4832680

Mapped by the Army Map Service  
Edited and published by the Geological Survey  
Control by USGS, USC&GS, and USCE  
Culture and drainage in part compiled from aerial  
photographs taken 1943  
Topography by planetarium surveys 1944  
Culture revised by the Geological Survey by photogrammetric  
methods from aerial photographs taken 1956. Field check 1956  
Selected hydrographic data compiled from USC&GS chart 325 (1955)  
This information is not intended for navigational purposes  
Polyconic projection. 1927 North American datum  
10,000-foot grid based on Maine coordinate system, west zone  
1000-meter Transverse Mercator grid ticks,  
zone 19, shown in blue  
Red tint indicates areas in which only landmark buildings are shown



PORTLAND WEST, ME.  
NE/4 PORTLAND 15' QUADRANGLE  
43070-F3-TF-024

THIS MAP COMPLIES WITH NATIONAL MAP ACCURACY STANDARDS  
FOR SALE BY U.S. GEOLOGICAL SURVEY  
DENVER, COLORADO 80225, OR RESTON, VIRGINIA 22092  
A FOLDER DESCRIBING TOPOGRAPHIC MAPS AND SYMBOLS IS AVAILABLE ON REQUEST

Revisions shown in purple compiled by the Geological Survey  
from aerial photographs taken 1975. This information  
not field checked. Map edited 1978

1956  
PHOTOREVISED 1978  
DMA 6971 III NE-SERIES V811



MAINE HISTORIC PRESERVATION COMMISSION  
55 Capitol Street  
State House Station 65  
Augusta, Maine 04333

Earle G. Shettleworth, Jr.  
Director

SEP 15 1989  
NATIONAL  
REGISTER

Telephone:  
207-289-2133

September 11, 1989

National Register of Historic Places  
National Park Service  
P. O. Box 37127  
Washington, DC 20013-7127

To Whom it May Concern:

Enclosed please find twelve nominations to the National Register of Historic Places for properties in Maine.

Sincerely,

Kirk F. Mohny  
Architectural Historian

Enclosures: 12 Nominations

KFM/tls

10/16-10/20/89

### SUBSTANTIVE MONITORING FORM

J. N. S.

#### INSTRUCTIONS FOR MONITORING FORM

Without reference to the property report, complete blanks for data elements that do not have asteriks.

Looking at the property report, enter a checkmark in the blanks which do have asteriks (\*) if the information has been properly entered into the data base. If the information is not correct, do not enter a check and circle the data element number on the monitoring form.

Compare the monitoring form to the property report to determine if there are discrepancies between the two. Circle the numbers of the data element entries that do not agree on the monitoring form.

Put the nomination folder with the Substantive Monitoring Form and the property report into the problem box. If there are no discrepancies between the Substantive Monitoring Form and the property report, return both to the data collector.

Monitor Babe

Date 6 Feb. 1990

Data Collector J. Whinston

Corrections Made 1 AMK 5-18-90

\*01. Reference Number 89001710

(IT) (I)

\*01a. Control No.     (\*)

\*02. Resource Name Western Promenade

\*03. Other Name/Site Number                                 

(\*) \*04. Address/Boundary     (\*) lypo i Promenade

\*05. City Name X (\*) \*05a. Vicinity     \*06. Restricted Address    

\*07. State Code ME \*08. County Code 005 (County name Cumberland)

\*09. Ownership:  
    Private X Public (Local)     Public (State)     Public (Federal)

*10. Resource Type <u>D</u> (B, D, S, U, O)	*11. No. of Contributing Buildings	Non-contributing Buildings
	Sites	Sites
	Structures	Structures
	Objects	Objects
	-----	-----
	-----	-----
	-----	-----
	-----	-----

\*12. Federal Agency    

\*13. Nom/Det Type S \*14. Multiple Name     (\*)

\*15. Nominator X State     Federal     Local     Other \*16. Nom. Name/Designations    

\*17. NPS Park Name     \*18. New Certification LI \*18a. Certification Date 10/16/89

Function/Subfunction Codes  
20/20a. Historic 15-15B15H1  
21/21a. Current 15-15B15H1

\*22. Construction Materials  
Foundation 96  
Roof 28  
Walls 58  
Other 56

\*23. Arch. Style +23a. Other Description \_\_\_\_\_ (28)

\*24. Level of Significance NA ST XLO IM  
\*25. Applicable Criteria A B X C D

\*25a. Significant Person's Name \_\_\_\_\_ (26)

\*26. Criteria Consideration A B C D E F G  
\*27. Areas of Significance 1801

\*28. Periods of Significance Q71061851041  
\*29. Circa  
\*29a. Specific Sign. Year: 2836, 2878, 2225

\*30. Cultural Affiliation \_\_\_\_\_ (26)  
\_\_\_\_\_  
\_\_\_\_\_ (26)  
\_\_\_\_\_ (26)

\*31. Architect/Builder/Engineer/Designer  
Goodwin, William (36)  
Olmsted Brothers (36)

\*32. Other Documentation NR DCR NHL LCS

\*32a. HAER/No. \_\_\_\_\_ (20)

\*32b. HABS/No. \_\_\_\_\_ (20)

\*33. Acreage 18.1  
\*34. UTM Coordinates (\*)

1 typo

PROPERTY NAME: Western Promenade

OTHER NAME/ NOT APPLICABLE

SITE No. :

MULTIPLE NAME: NOT APPLICABLE

ADDRESS/ Roughly Western Promende from Maine Medical Center to Valley  
BOUNDARY : St.

CITY: Portland

COUNTY: Cumberland

STATE: MAINE

Restricted Location Information: Owner: LOCAL Resource Type: DISTRICT

Contributing Noncontributing

Buildings	0	0
Sites	1	0
Structures	1	1
Objects	0	0

Nomination/Determination Type: SINGLE RESOURCE

Nominator: STATE GOVERNMENT

Nominator Name:  
NOT APPLICABLE

Federal Agency: NOT APPLICABLE

NPS Park Name: NOT APPLICABLE

Certification: DATE RECEIVED/PENDING NOMINATION

Date: 09/15/89

Other Certification: NOT APPLICABLE

10/16/89

Historic Functions: LANDSCAPE

Historic Subfunctions: PARK  
NATURAL FEATURE

Current Functions: LANDSCAPE

Current Subfunctions: PARK  
NATURAL FEATURE

Level of Significance: LOCAL Applicable Criteria: ARCHITECTURE/ENGINEERING

Significant Person's Name: NOT APPLICABLE

Criteria Considerations: NOT APPLICABLE



Area of Significance: LANDSCAPE ARCHITECTURE

Periods of:	1825-1849	1850-1874	Circa:	Specific Sig. Years:
Significance:	1875-1899	1900-1924		1836
				1878
				1905

Architect/Builder/Engineer/  
Designer:

Cultural Affiliation:

Goodwin, William  
Olmsted Brothers

NOT APPLICABLE

Other Documentation:

NOT APPLICABLE

HABS No. N/A

HAER No. N/A

Architectural NO STYLE LISTED  
Styles:

Describe Other Style: NOT APPLICABLE

Foundation Materials: INAPPLICABLE  
 Wall Materials: INAPPLICABLE  
 Roof Materials: INAPPLICABLE  
 Other Materials: INAPPLICABLE

Acreage: 18.1

UTM	Zone	Easting	Northing	Zone	Easting	Northing
Coordinates:	19	/3 96 880	/48 33 760	19	/3 97 080	/48 33 830
	19	/3 97 480	/48 32 850	19	/3 97 000	<u>49</u> 32 680

Handwritten mark: a circle around the number 49 in the coordinate table, with a diagonal line through it and the number 48 written below.